



Recommended Applications

Industrial insulation shaped by experts:

Selection of expert tools to assist with your technical needs...



Product Catalogue

ROXUL TECHNICAL INSULATION

CS47 - Pipe

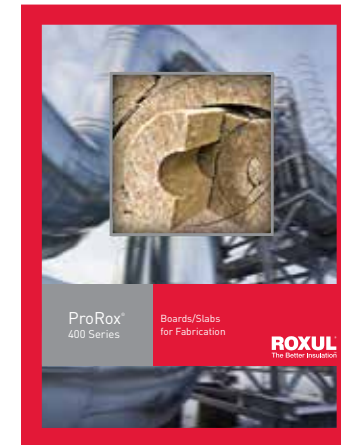
Compliance																
	ASTM	ULC	UL	ULC	UL	ULC	UL	ULC	UL	ULC	UL	ULC	UL	ULC	UL	ULC
Material	•	•	•	•	•	•	•	•	•	•	•	•	•	•	•	•
Thickness	•	•	•	•	•	•	•	•	•	•	•	•	•	•	•	•

CS12 - Board

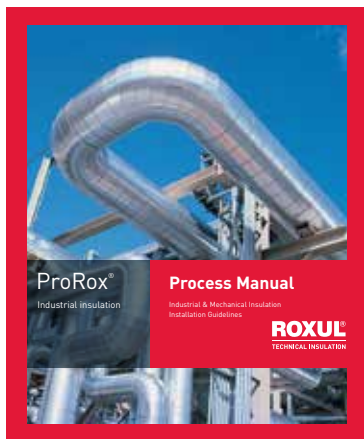
Compliance																
	ASTM	ULC	UL	ULC	UL	ULC	UL	ULC	UL	ULC	UL	ULC	UL	ULC	UL	ULC
Material	•	•	•	•	•	•	•	•	•	•	•	•	•	•	•	•
Thickness	•	•	•	•	•	•	•	•	•	•	•	•	•	•	•	•

CS53 - Blanket

Compliance																
	ASTM	ULC	UL	ULC	UL	ULC	UL	ULC	UL	ULC	UL	ULC	UL	ULC	UL	ULC
Material	•	•	•	•	•	•	•	•	•	•	•	•	•	•	•	•
Thickness	•	•	•	•	•	•	•	•	•	•	•	•	•	•	•	•



ProRox® 400 Series Fabricated Industrial Solutions Brochure



Industrial Insulation Process Manual (North America)

ROXUL TECHNICAL INSULATION

CS12 - Board

Compliance																
	ASTM	ULC	UL	ULC	UL	ULC	UL	ULC	UL	ULC	UL	ULC	UL	ULC	UL	ULC
Material	•	•	•	•	•	•	•	•	•	•	•	•	•	•	•	•
Thickness	•	•	•	•	•	•	•	•	•	•	•	•	•	•	•	•

CS53 - Blanket

Compliance																
	ASTM	ULC	UL	ULC	UL	ULC	UL	ULC	UL	ULC	UL	ULC	UL	ULC	UL	ULC
Material	•	•	•	•	•	•	•	•	•	•	•	•	•	•	•	•
Thickness	•	•	•	•	•	•	•	•	•	•	•	•	•	•	•	•

Compliance Chart (ASTM, CAN/ULC, UL)



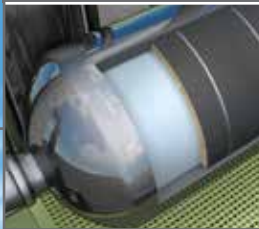
Corrosion Under Insulation (CUI) Brochure



ProRox® FSL 900 Series
Formerly RHT® FLEX
ProRox® MA 900 Series
Formerly RHT® WRAP



ENERWRAP® MA 960
Formerly ENERWRAP®



ProRox® SL 900 Series
Formerly RHT® BOARD



New product names, logical structure

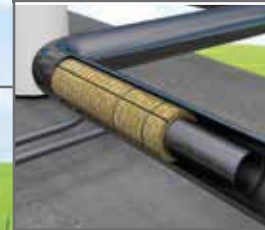
Each product name is structured in the same clear way:

e.g.: **ProRox SL 960 NA**

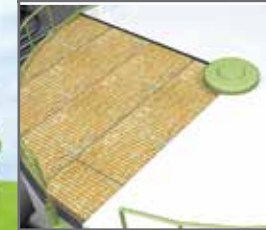
Product range ← - - - - - → Local market specifications

<p>■ Product identifier ← - - - - -</p> <p>SL = Boards/Slabs FSL = Flexible Boards/Slabs PS = Pipe Insulation MA = Wrap/Mat</p>	<p>■ Application code</p> <p>400 Series = Industrial Fabricated Insulation 500 Series = Compression Insulation 700 Series = Comfort/Multi-Purpose Insulation 900 Series = Thermal Insulation</p>
----------------------------------------------------------------------------------------------------------------------------------------------------	---------------------------------------------------------------------------------------------------------------------------------------------------------------------------------------------------------------------

ProRox® PS 900 Series
Formerly TECHTON® • STURDIROCK®



ProRox® SL 500 Series
Formerly RHT® BOARD



ProRox® SL 900 Series
Formerly RHT® BOARD

